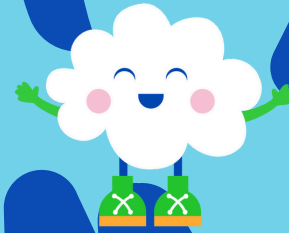


ENHANCING LEARNING WITH ASSESSMENT DATA

By integrating assessment data into learning strategies, early educators can enhance teaching effectiveness and child outcomes.



Learning
BEYOND

Pie Charts to Planning Presentation Summary

Mindset Check~In

Understanding one's mindset towards data is crucial. Reflect on your initial thoughts when you hear the word 'data'.



Representing Your Data Visually

Visual representation of data helps in better understanding and communication. Utilize various charts and graphs to represent performance data effectively.



Technology Tips

Several tools can assist in creating visual data representations:

- **Microsoft Excel**
 - : Format, organize, and calculate data.
- **Google Sheets**
 - : Web-based spreadsheets for collaboration.
- **LiveGap**
 - : Free online chart creation.
- **Infogram**
 - : Create and share data visualizations.
- **Visme**
 - : Design and share visual materials.

Identifying Patterns & Trends

Analyze data to uncover patterns and trends. Reflective questions to guide your analysis include:

- Are minimum expectations being met?
- How does data change over time?
- Are there standout data points?
- Does data vary across different teachers or age groups?
- Did implemented changes impact the data?
- What are the expected future data points?

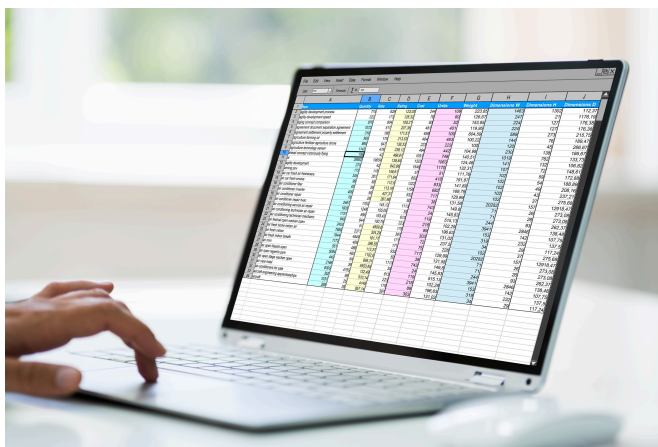


Identifying Areas for Growth

Evaluate if goals are within reach by:

- Comparing individual data to expected targets.
- Analyzing data between different teachers or children.
- Assessing overall growth trajectories.

- Correlating data with changes in the learning environment.
- Considering external factors.



Charting a Course for Learning

Utilize new insights from data analysis to plan future learning strategies. Continually refine approaches based on data-driven evidence.

Resources

Access tools and resources to aid in data visualization and analysis:

- [Head Start Early Childhood Learning & Knowledge Center](#)
- [New America](#)
- [4C for Children](#)
- [Innovare](#)
- [Renaissance](#)
- [Dallas Independent School District](#)
- [CCSD Clark County School District](#)